

BIO-Placenta - Facial Cream

Formular No. : LED11B-002.5(200923)



Phase	Name	INCI	Supplier	%
A	D/W	Water	-	69.38
	PANTHENOL	Panthenol	-	0.50
	CARBOPOL ETD 2020	Acrylates/C10-30 Alkyl Acrylate Crosspolymer	-	0.25
B	1,3-BG	Butylene Glycol	-	5.00
	EDE-CIDE PLUS	Octanediol, Ethylhexylglycerin, Citrus Grandis (Grapefruit) seed extract, Artemisia princeps extract	LABIO	0.60
B-1	GLYCERIN	Glycerin	-	5.00
	XANTHAN GUM	Xanthan gum	-	0.08
C	TORNARE	Glyxosyl trehalose/Hydrogenated starch hydrolysate	Hayashibara	1.00
D	EMULIUM KAPPA 2 MB	Candelilla/Jojoba/Rice bran polyglyceryl-3 esters, Glyceryl stearate, Cetearyl alcohol, Sodium stearoyl lactylate	Gattefosse	1.50
	EMULIUM DELTA MB	Cetyl Alcohol, Glyceryl Stearate, PEG-75 Stearate, Ceteth-20, Steareth-20	Gattefosse	1.50
	POLYGLYKOL 4000P	PEG-90	-	1.00
	GELEOL PELLETS	Glyceryl stearate	Gattefosse	0.50
	APIFIL CG	PEG-8 Beeswax	Gattefosse	1.00
	LANETTE O	Cetearyl alcohol	BASF	1.50
	ALMAX-3800	Sorbitan monooleate	-	0.50
	DC 200/100CS	Dimethicone	-	1.50
	LIPEX SHEA	Butyrospermum Parkii Butter	AAK	1.00
	FERMENTOIL OLIVE	Pseudozyma Epicola/Olive Fruit Oil Ferment Filtrate	LABIO	1.50
	D/W	Water	-	2.00
	T.E.A	Triethanolamine	-	0.25
F	SIMUGEL NS	Hydroxyethyl Acrylate/Sodium Acryloyldimethyl Taurate Copolymer, Squalane, Polysorbate 60	-	1.00
G	PHENOXYETHANOL	Phenoxyethanol	-	0.40
H	BIO-PLACENTA	Water, Lecithin, Acetyl glutamine, sh-Oligopeptide-1, sh-Oligopeptide-2, sh-Polypeptide-1, sh-Polypeptide-9, sh-Polypeptide-11, Bacillus/folic acid ferment filtrate extract, Sodium hyaluronate, Caprylyl glycol, Butylene glycol, 1,2-Hexanediol	LABIO	3.00
I	FRAGRANCE	Fragrance	-	0.04
				100.00

Process Instructions

- 1 Dissolve part A / Agi-Mixing
- 2 Dissolve part B / Hand-mixing
- 3 Dissolve Part B-1 in another container / Hand-mixing
- 4 Add Part B-1 into Part B / Agi-Mixing
- 5 Add part B into part A / Agi-mixing
- 6 Add part C into part A / Agi-mixing
- 7 Dissolve Part D / Bring it up to 80°C
- 8 Part A/Homogenize (2000rpm, 1min)
- 9 Add Part D into part A / Homogenize (3500rpm, 4min)
- 10 Add Part E into part A / Homogenize (4000rpm, 3min)
- 11 Add part F into part A / Homogenize (4500rpm, 3min)
- 12 Cool down to 40°C
- 13 Add part G into Part A / Homog (5000rpm, 2min)
- 14 Add part H into Part A / Homog (5000rpm, 2min)
- 15 Add part I into Part A / Homog (5000rpm, 1min)



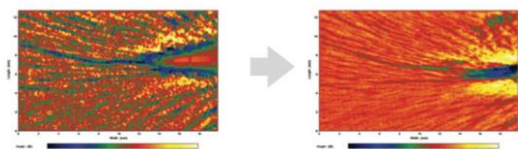
BIO-Placenta - Facial Cream

Formular No. : LED11B-002.5(200213)



Description

***Rich cream formulation helps to moisture and de-age your skin.**



21% crow's feet wrinkle has been reduced after 4 weeks

Information

Aspect : White cream

Manufacturing date : 2020.09.24

Additional information : (Shelf life) 6 months after opening

Ingredients

- BIO-Placenta

Mixture of 5 different growth factors makes synergic effect with folic acid and acetylated glutamine

Function _ Anti-wrinkle / Skin elasticity / Moisturizing

Formulation tips! _ Add into water phase after cool down process

- EDE-Cide plus

No preservative concept preservative

Function _ Anti-microbial

Formulation tips! _

The recommendations and formulations given are based on our knowledge and experience in the field of technical application. Those who use our recommendations and formulations as well as those who process LABIO Active agents are themselves responsible for the adherence to prevailing statutory regulations and the observance of patent rights as well as other protective rights for other companies.